

# *Maternity Dresses*



Christy Wallis Photography

# *Sasha Boho 2-piece set in Soft Beige*

One Size Fits S-XL

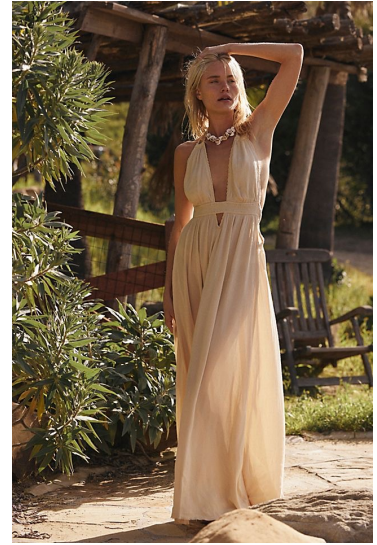




# Free People Boho Maxi

Soft Sand  
- S, M, L

Cream - S, M, L



Blue - S, M, L

Pink - S, M, L



Flattering Sun goddess maxi in a crinkly crepe with a deep v neck adjustable rope halter and stretchy mocked empire waist with geo cutout detailing below. You can wear a lace bandeau for more coverage.

Rust - S, M, L





# Off-the-Shoulder Closed Front

White – M, L



Pink – M, L





*Off-the-Shoulder Closed Front  
Tighter Fitting, Short train*

Pink - L



Aqua - M



# *PinkBlush Lace Mesh Maxi*

White – M, L, XL



Baby Blue– M



Blush – S, M, L, XL



Cream XL



Dusty Blue – L



A lace mesh overlay maternity maxi dress featuring beautiful scalloped trim, semi-sheer short bell sleeves and back, a higher cut v-neckline, and a hook and hidden zipper back closure. Bust and skirt are double lined to prevent sheerness.



# Lydia Maxi

Gray – M, L



Blush – M, L



Flowing chiffon material over a full lining from bodice to hem.

Sleeves are unlined.

Three gold buttons at each wrist, no elastic.

Elastic waist, connected sash on each side.

Natural – M, L, XL



Surplice neckline, this is not a wrap dress.

Bump and nursing friendly.

# Jennifer Deep V

Dusty Mauve – M, L



Sand – M, L, XL



Ivory – M, L



Medium-weight, soft knit material

Deep V in both the front and back of the dress  
Lace trim around the neck and ruffle flutter sleeves  
It has adjustable rope ties at the sides with small elastic at back.

Waist can be cinched with side ties, measurements are when untied.

Bump and nursing friendly

Front slits and Partially lined



# Harper Smocked Maxi

Blush – M, L



White – M, L



Romantic style maxi with beautiful chiffon and smocking details

Smocked elastic at shoulders, waist and bicep

Cannot be worn on the shoulder

Fully lined except for sleeves and back bodice  
Bump friendly

# *Off-Shoulder Sheer Open Front*

White – M,L



White shoulder maternity maxi dress with a sheer chiffon layered open bottom, long sleeves, and cinching under the bust.



# *Brianna Off-Shoulder Closed Ruffled Maxi*

Soft Mauve - M



Ivory - M



Light Blue - M



# Other Boho Dresses

**Audrey White Halter Maxi**  
- M, XL



**Julia Strapless Boho**  
in Antique Pink - M



**Anna Strapless Boho**  
in Beige - S,M,L,XL



**Anna Strapless Boho**  
in Off-White - M, L, XL





# Other Dresses

Rachel Mauve Midi – M,L



- Comfortable and flattering in all the right places!
- Silky, satin like material
- Fully lined
- Smocking at waist
- Ruffle details at collar bone
- Bump friendly

Andy White Floral Kimono –S,M,L



- Delicate pastel floral design on white background
- Kimono style sleeve
- Slit at front
- Elastic waistband with self tie sash
- Lined to mid thigh
- Bump and nursing friendly

Nika Pleated Maxi in Mauve –S,M,L



Sophie Deep V Open Back In Blush –M



## *Other items in the Closet*

**Champagne Long Sleeve Off  
the Shoulder Blouse**  
Size L





# Flower Crowns



Two matching of these

# Toddler Dresses

Calyssa Rose Smoke  
2T



Calyssa Cream  
3T



Antique Lace Dress  
2/3/4



Ivory Crochet Top  
Flutter Sleeve dress  
2T and 5



Tulle Lace Tutu  
Peachy cream  
2/3, 4T/5





# *Toddler Dresses*

18 mo/3t/5t



Tutu Dress  
Mauvey pink  
3/4, 5/6

